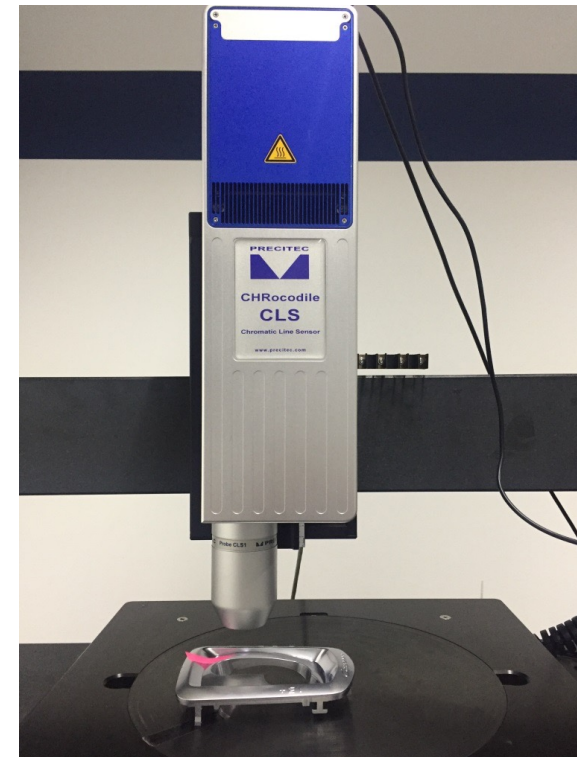


## **Precitec Optronik Flaw inspection with CHRocodile CLS**

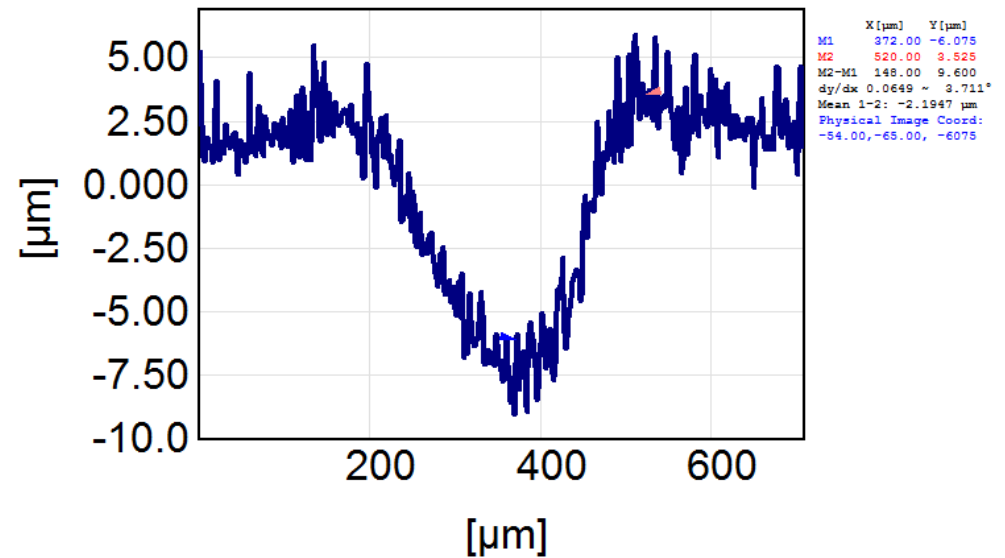
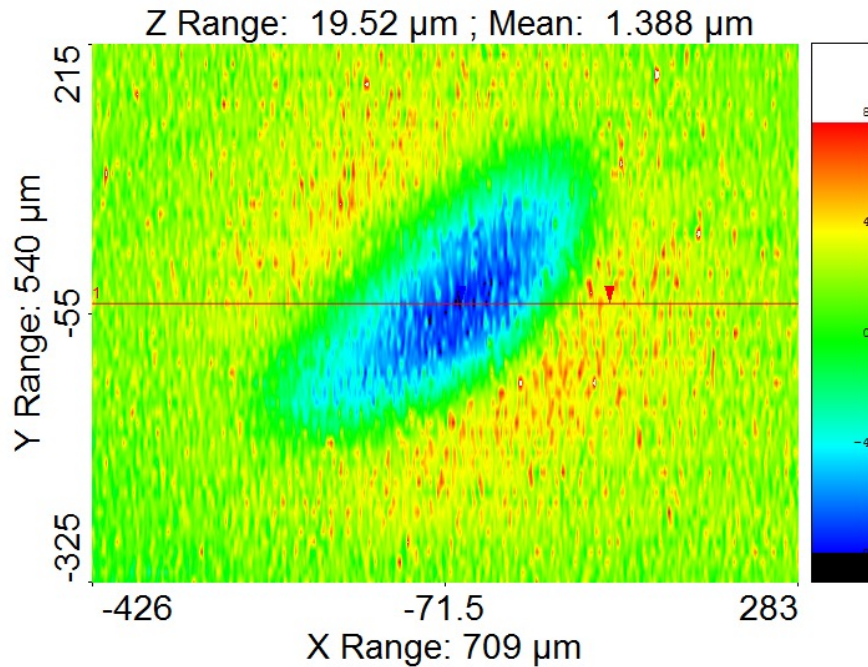
Yuedi YU  
Feb. 23 2017

# OVERVIEW

- Measuring task
  - The flaw on the sample surface should be measured
- Approach
  - CHRcodile CLS (500 7994)
  - CLS 1 probe (500 7895)



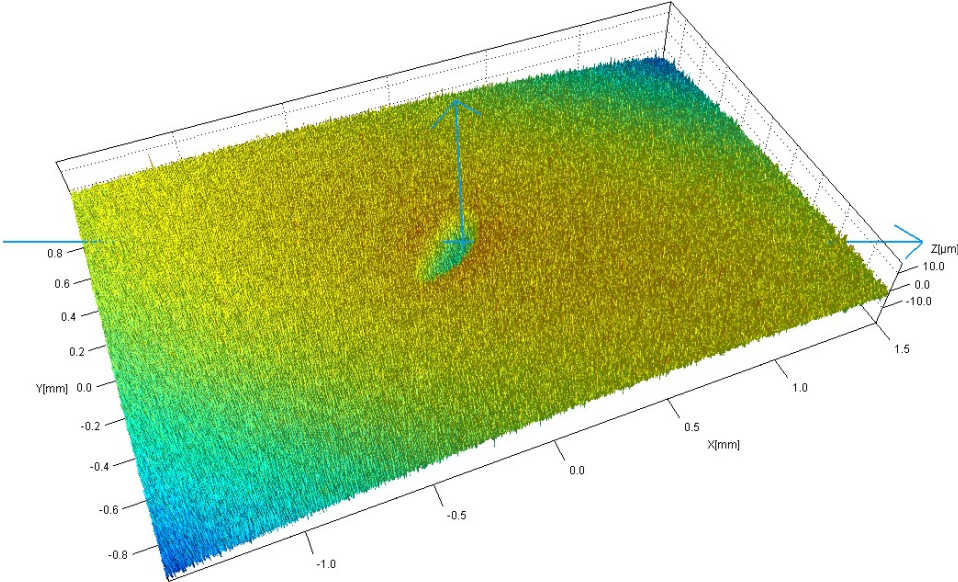
# MEASURING RESULT



The CLS scans over the flaw area with 1 $\mu\text{m}$  x 10 $\mu\text{m}$  lateral resolution. By scanning an area of 3mm x 1.91mm, the scan time is about 2 seconds.

The inspected flaw has width of 330 $\mu\text{m}$ , and depth of 9.6 $\mu\text{m}$ .

# MEASURING RESULT



3D image of the inspected flaw.